



C O D D E

Newsletter Bureau Veritas CODDE – October 2009

THIS MONTH

- EIME 4.1 new version!
Page 2
- A European carbon tax
Page 3
- EuP European Directive
extending to Energy Relating
Products
Page 4
- French “Pro WEEE”
Recycling professional EEE
Page 5



Next EIME English on line demonstration!

November 23rd, 2009

Free registration: codde@fr.bureauveritas.com

Bureau Veritas
CODDE



C O D D E

Bureau Veritas CODDE
170 Rue de Chatagnon
ZI CENTR'ALP
38430 MOIRANS
FRANCE
Phone: +33 4 76 07 36 46
Fax : +33 4 76 37 44 30
codde@fr.bureauveritas.com

EVENTS

REACH Meetings, 4 novembre 2009 – Chartres Expo, France.

REACH Meetings 2009 is a European business convention, based on high-qualified one-to-one meetings, welcoming all the sectors impacted by REACH regulation (Registration, Evaluation and Authorisation of Chemicals). This event will constitute a unique opportunity to connect people that matter and expand a world of alliance and Business. You will identify your future partners thanks to personalized meetings!

www.reach-meetings.com

World Recycling Forum Shanghai '09, November 10-13, Shanghai

International Conference & Exhibition on Electronics, Car and Battery Recycling

www.icm.ch

ICGSI 2009, December 2-4, Chiang Rai, Thailand

2nd International Conference on Green and Sustainable Innovation Sufficiency, Sustainability through Life Cycle Thinking.

The conference website will be soon available at: <http://www.thailca.net/>

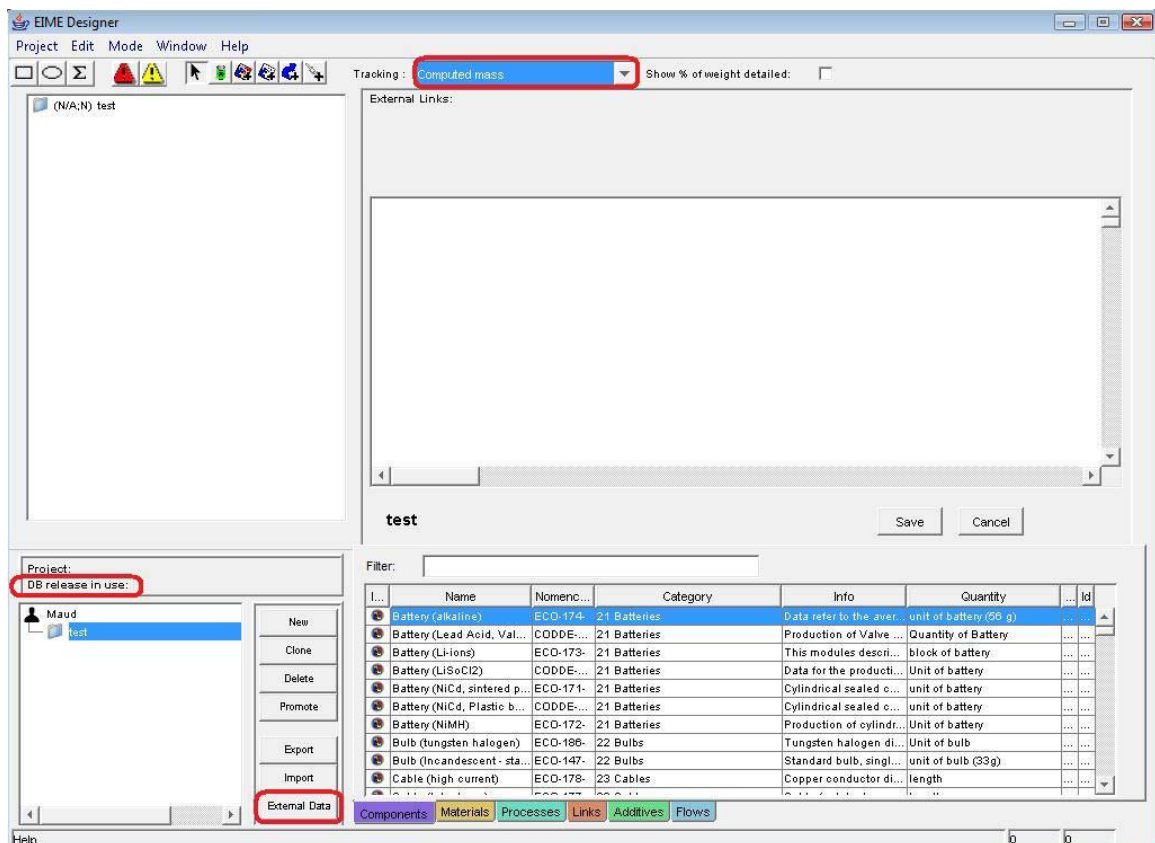
9th International Electronics Recycling Congress », January 20-22, Salzburg

www.icm.ch

EIME 4.1 new version!

CODDE has delivered the new version of his life cycle analysis software EIME 4.1. The new 4.1 version contains the following evolutions and corrections:

- Module Filter correction;
- Recyclability Potential calculation correction;
- Visibility of the version number of the database;
- Offset addition in the element copy-paste;
- Mass tracking addition;
- Import of EcoInvent data new functionality (Only on demand);
- Impact indicator Link correction in Expert interface.



More information
codde@codde.fr

A European carbon tax

In the early 1990s, Finland and Sweden were the first countries who impose a carbon tax on fuel. In France, an entry into force of such tax is expected in 2012 with a price of 17 Euros per CO₂ tonne. In this context, the European Commission envisages imposing a carbon tax in Europe for sectors which are not currently covered by the system of carbon emission quotas, such as transportation or agriculture.



What is the carbon tax?

The carbon tax is an environmental tax on emissions of carbon dioxide, which aims to promote reduction of global warming by considering polluters as responsible of their emissions.

The carbon tax is complementary to the principle of carbon emission quotas: carbon tax imposes a fixed price for free quantities while carbon emission quotas determine the quantities by allowing their prices vary.

Generally, the carbon tax aims to:

- Reduce CO₂ emissions and indirectly reduce emissions of other pollutants (associated with burning oil or coal, for example);
- Reduce use of fossil fuels and favourite use of cleaner energy.

How and to whom does carbon tax apply?

The European carbon tax should apply to the transport and agricultural sectors, two sectors not covered by the carbon emission quotas.

Firstly, the European Commission suggested adding in minimum of 0.01 euro per kg of CO₂ for the price of fuel. Also, the motor fuels are taxed 0.01 or 0.03 euro per kg of CO₂. These rates will be increased gradually when the European Commission decides to raise its targets on reducing emission.

The carbon tax should be applied to all member states from 2013.





EuP European Directive extending to Energy Relating Products

The European Council adopted on 25 September 2009, a revision of the EuP Directive.

Modifications of the revised EuP Directive are made in extending its scope. In fact, the Directive will focus not only on Energy Using Products but will be extended to all Energy related Products such as windows, taps and shower heads.

To better understand, these are some definitions:

“Energy-using product” or “EuP”

Means a product which, once placed on the market and/or put into service, is **dependent on energy input** (electricity, fossil fuels and renewable energy sources) to work as intended, or a product for the generation, transfer and measurement of such energy, including parts dependent on energy input and intended to be incorporated on the market and/or put into service as individual parts for end-users and of which the environmental performance can be assessed independently.

“Energy-related products”

All goods **having an impact on energy consumption during their use** which are placed on the market and/or put into service, including items intended to be inserted in a energy-related product and which are placed on the market and/or put into service as individual items for final users and their environmental performance can be evaluated independently.

However, despite the revision of the Directive, it does not apply to transportation of persons or goods.

The change of scope should lead to the definition of new categories of priority products and to the realisation of new preparatory studies.

French “Pro WEEE” Recycling professional Electric and Electronic Equipment

Since July 31st 2009, the new track on Pro WEEE regarding electronic security equipment, lighting and control, that have no dedicated recycling network has been tested in the Rhone-Alpes French area.

Created by Récyllum a French eco-agency supported by 4 professional unions, involving 24 industrial drop-off centers and 10 electricians over 5 departments. This pilot test allows manufacturers and artisans to recycle their waste for free according to WEEE regulations

From 2010, Récyllum will gradually deploy this system to whole France. The eco-agency considers the waste deposit at 70,000 tonnes per year.



French WEEE Pro to:

- Lighting (street lighting, extern and intern lighting, ...);
- Security lighting (BAES,);
- Security electronic equipment (access control, fire detector, ...);
- Control equipment (thermostat, timer, ...).

More information

<http://www.recyllum.com/deee-professionnels>